



Panorama™

# Operator's Guide



**Precision**  
Planting®

# Table of Contents

Home Screen ..... 3

All Fields ..... 5

Map Details ..... 6

Manage Operation ..... 11

Reports ..... 19



# Home Screen

The screenshot shows the Panorama Overview page. At the top, there is a navigation bar with 'Panorama', 'All fields', 'Manage Operation', and 'Reports'. On the right, it says 'Product Support Tremont'. Below the navigation bar, the page title is 'Overview'. A red box highlights the 'Recent Activity' section, which shows three field cards. The first card is for 'FD2' on 'AUG 28, 2025', with 'FPS DAY 2' and 'Corn less than 0.1 Sprayed'. The second card is for 'Example 1' on 'APR 15, 2025', with 'Corn 84 ac Planted'. The third card is for 'Ackerman N70' on 'JUN 10, 2024', with 'Corn 81 ac Sprayed'. Below the cards is a 'See all fields' button. At the bottom, there is a 'Recent devices' section.

**Recent activity** shows the recent fields uploaded into Panorama.

Field Name	Date	Activity	Crop	Details
FD2	AUG 28, 2025	FPS DAY 2	Corn	less than 0.1 Sprayed
Example 1	APR 15, 2025	Example 1	Corn	84 ac Planted
Ackerman N70	JUN 10, 2024	Ackerman N70	Corn	81 ac Sprayed

The screenshot shows the Panorama Recent devices page. At the top, there is a navigation bar with 'Panorama', 'All fields', 'Manage Operation', and 'Reports'. On the right, it says 'Product Support Tremont'. Below the navigation bar, the page title is 'Recent devices'. A red box highlights the 'Recent devices' section, which shows a list of devices and a map. The first device is 'Nate's Sandbox' with ID '30129375', 'ACTIVE', 'Software: 2025.340.4', 'Speed: --', and 'Field: Behind Ulysses's Cousin's Roost'. The second device is 'Nate's desk (Not Sandbox)' with ID '30129348', 'ACTIVE', 'Software: 2025.121.0', 'Speed: --', and 'Field: Test'. The third device is 'Came 2020' with ID '30125677', 'ACTIVE'. Below the list are 'Add device +' and 'See all devices' buttons. A map on the right shows the location of the devices, with a red box highlighting it. The map shows a satellite view of a field with roads labeled 'Townline Rd' and 'Lakeside Rd'. A white dot on the map indicates the location of an actively connected device.

**Recent devices** will display recent devices sending data to Panorama.

The map will display the location of any 20|20 actively connected to Panorama and their location when connected to GPS.

Panorama® All fields Manage Operation Reports Product Support Tremont

**Totals** 2025 | Corn

Planted **0.029 ac** in 1 field

Sprayed **0.029 ac** in 1 field

**Hybrid Totals** 2

Fields	Acres	Rate	Yield	Moisture
LG67C91STX	1	57.2	28.7K	--
LG66C06VT2PRO	1	27	29.5K	--

**Liquid Totals** 9

Fields	Acres	Total	Rate
Name	Fields	Acres	Total
	ac	gal	gal/ac
Nachurs CropMax	1	84.5	20.6
RhizoLink	1	84.5	10.3
28-0-0-5	1	84.3	494.4
Nachurs Triple Option	1	57.5	243.8
10pct Boron	1	57.3	6.3
9-30-0-1	1	57.3	504.1

**Totals** will display at a glance, all of the total inputs and acres covered.

**Totals** can be filtered by crop and season.

Changing the selection at the top of each box will change the displayed values.

# All Fields

**All fields** displays every field that data has been uploaded for.

**Filtering** allows you to filter fields by crop, farm, client, season, etc. Note: A season must be selected when viewing the fields list.

**Filter**

Season

Client

Farm

► ADVANCED FILTERING

**Customize**

Select a season to start customizing the data shown on this page

**Actions**

Search fields

**Fields (11)** Sort

Client **WC Test** | Farm **RnD**  
**Bolligers RC** >

Client **Johnson** | Farm **Johnson**  
**Broadway Farms** >

Client **Gary M** | Farm **Gary M**  
**East Hodne** >

Client **Gary M** | Farm **Gary M**  
**Flood** >

Client **Mike Ott** | Farm **Shoemaker**

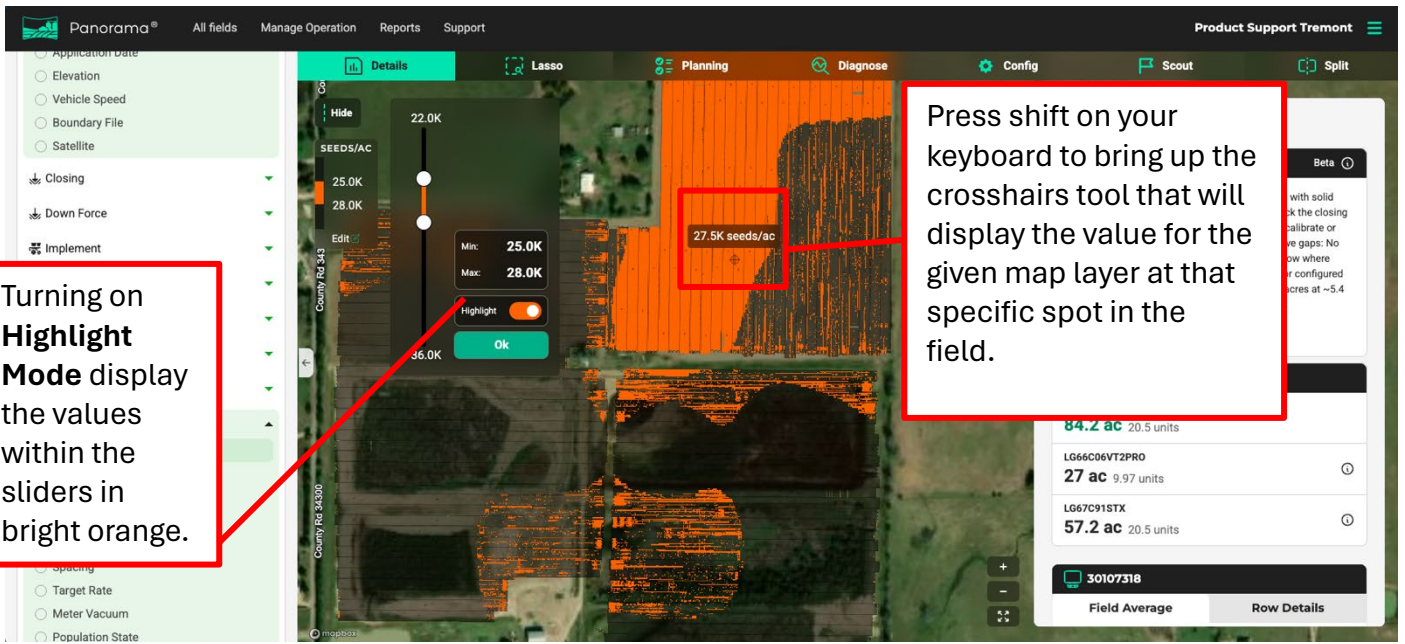
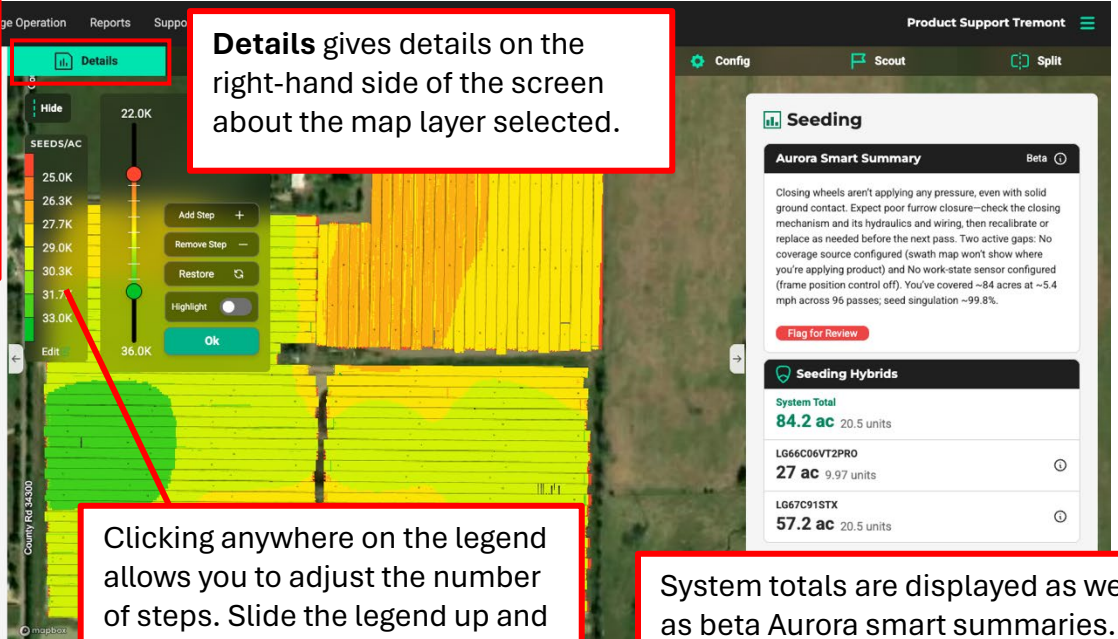
# Map Details

Select the map layer by clicking on a system, then select the map layer from the list available.

**Details** gives details on the right-hand side of the screen about the map layer selected.

Clicking anywhere on the legend allows you to adjust the number of steps. Slide the legend up and down to adjust ranges, granularity, and colors.

System totals are displayed as well as beta Aurora smart summaries. \*Aurora can be disabled in **Manage Operation > Data Sharing**.

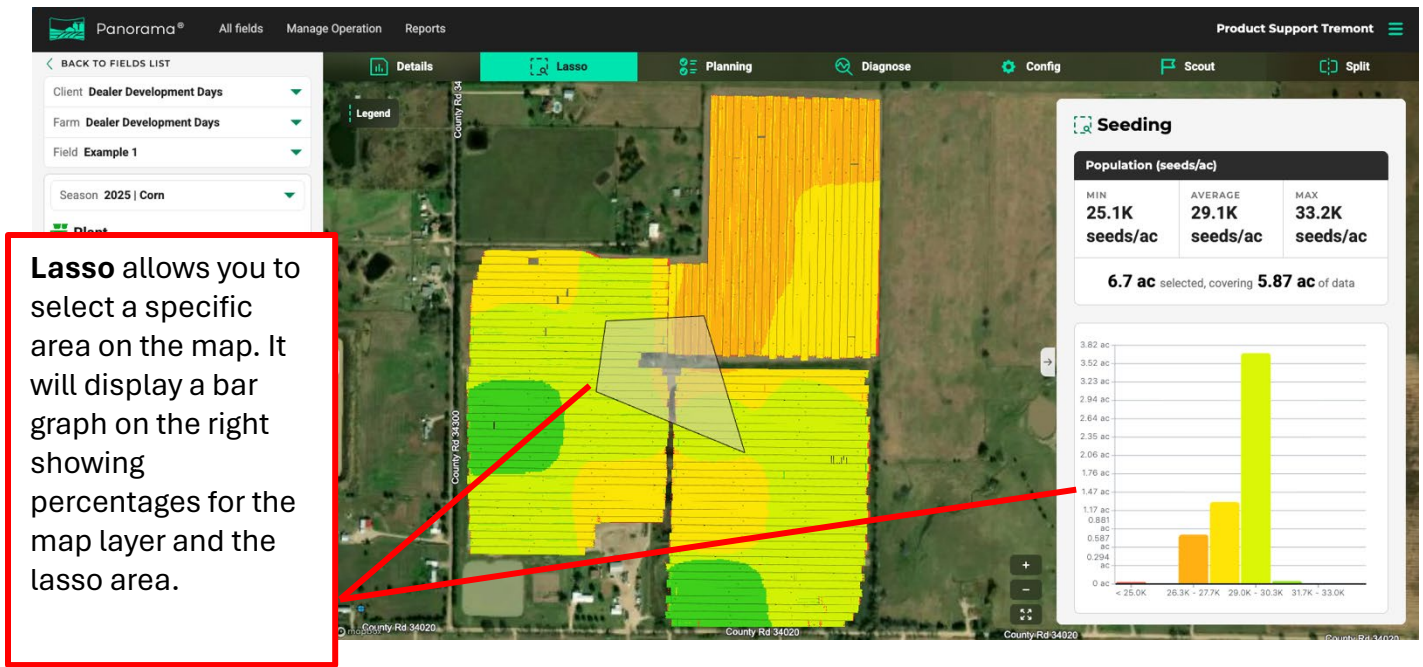


Turning on **Highlight Mode** display the values within the sliders in bright orange.

Press shift on your keyboard to bring up the crosshairs tool that will display the value for the given map layer at that specific spot in the field.



Selecting a metric will expand a graph detailing each row's average.



Lasso allows you to select a specific area on the map. It will display a bar graph on the right showing percentages for the map layer and the lasso area.

**Planning**

Example 1 0 plans NEW PLAN

No plans have been made for this field. Create a plan to start getting ready for your season.

**Boundary** CREATE

A boundary hasn't been created for this field. Press Create to get started

**Prescriptions** CREATE

A prescription hasn't been created for this field. Press Create to get started

**Diagnose**

Diagnose displays the diagnose table values for the given spot in the field for modules on the selected system.

To change the hardware displayed, select the applicable system on the left.

**Seeding**

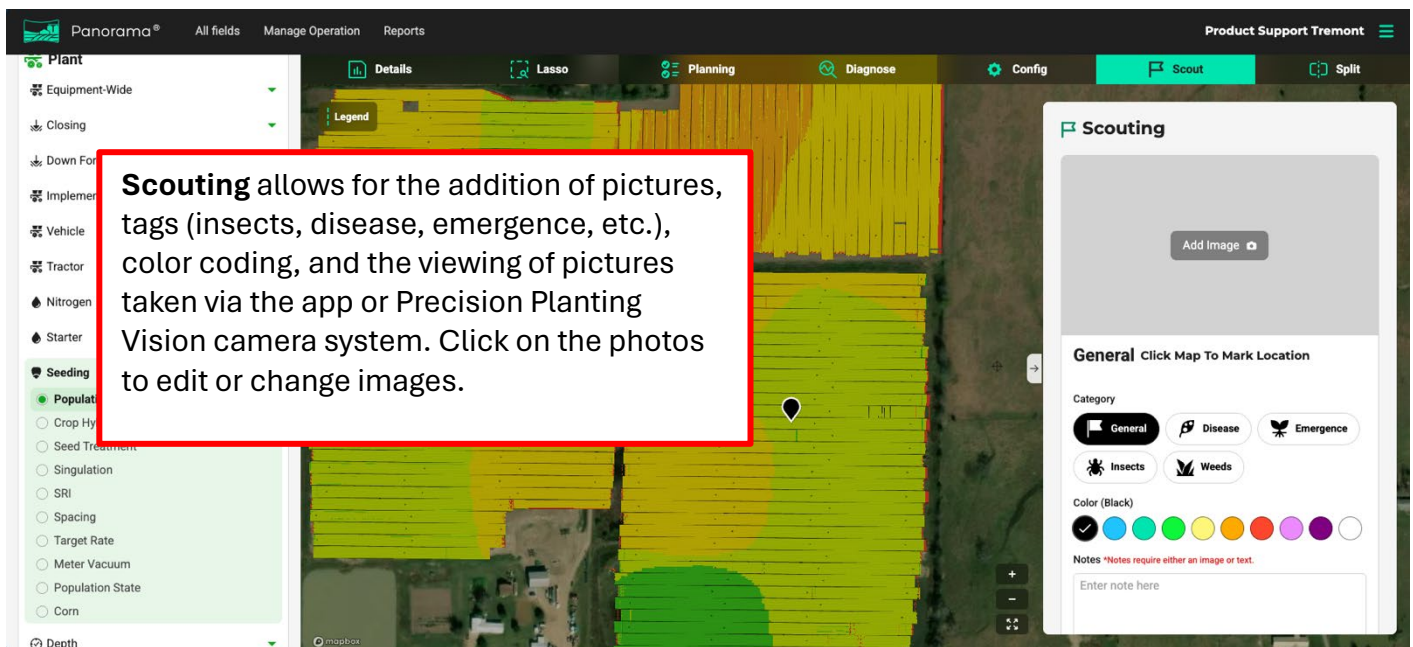
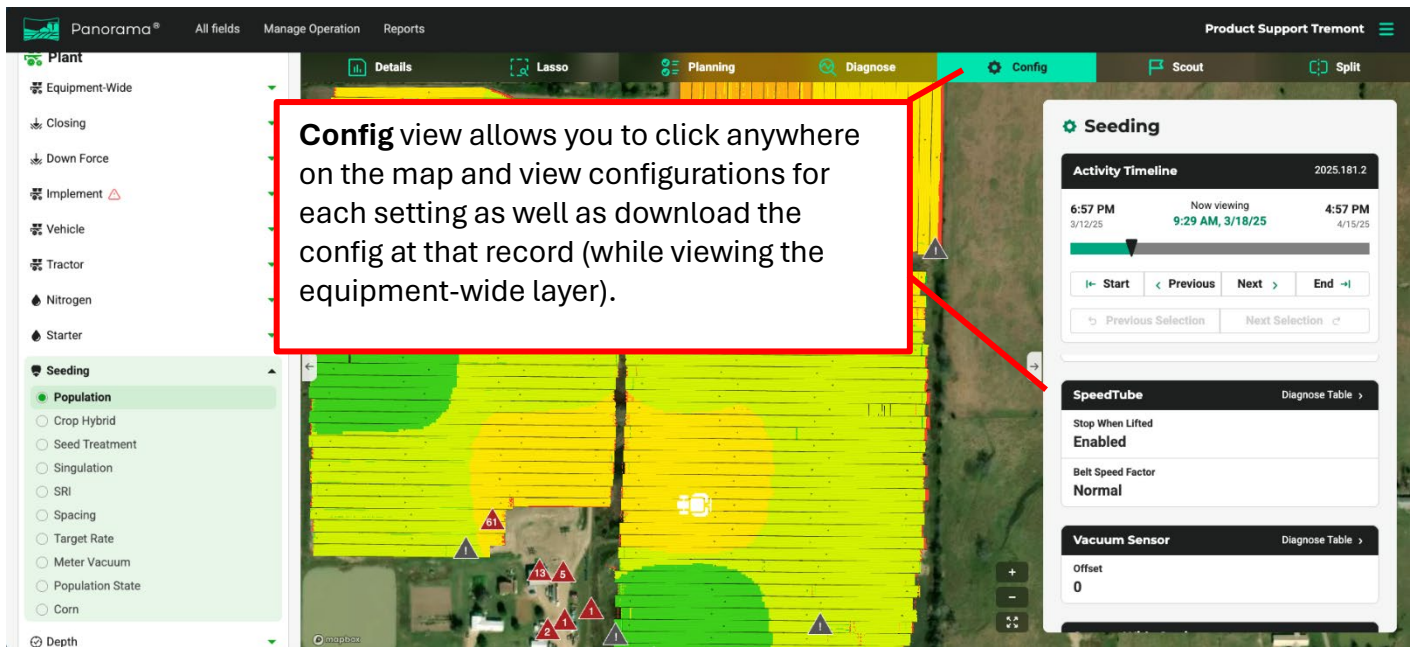
Activity Timeline 2025.181.2

6:57 PM 3/12/25 Now viewing 9:29 AM, 3/18/25 4:57 PM 4/13/25

Location	Flights Per Second Act	Flights Per Second Cmd	Stability %	Duty Cycle %	Current	Supply Volts	See Per Sec
Average	127.5	127.6	99.2	55.2	1.02	13.5	17.

SpeedTube Module Settings

Vacuum Sensor Module Settings



Panorama® All fields Manage Operation Reports Product Support Tremont

Details Lasso Planning Diagnose Config Scout Split

Nitrogen Starter Seeding Population Depth Row Cleaner

Comparison System

SEASON 2025 | Corn

Plant

Equipment-Wide Closing

Down Force

Average Force

Down Force

Margin

Applied Force

Target

Force State

Legend

Legend

**Split Map** allows you to split the screen into two map layers selected by system and map layer on the left side of the screen. **Comparison System** is responsible for the map on the right.

# Manage Operation

**Manage Operation** overview will show the basic details of your operation.

Change the language or measurement system by changing the selection at the bottom of the page.

**Past Uploads** displays a list of past file uploads and their status.

**Application Data Upload** allows you to manually upload .2020 files, Gen 2 .dat files, and files from JD Operations Center. Uploads can be done either in batches or a single file upload.

Client   Farm   Field	Pass	Submitted	Status
--   --   -- >	2024 Planting	10/16/2025, 9:16:49 AM	Suc
Dealer Development Days   Dealer Development Days   Example 1 >	2025 Planting	10/15/2025, 8:57:47 AM	Suc

Panorama® All fields Manage Operation Reports Product Support Tremont

**Edit**

Overview  
Data Management  
Application Data Upload  
**Edit**  
Archive  
Planning  
Software  
Members  
Devices  
Data sharing  
Billing  
Feedback

Search fields

Filter

Download Selected

Edit (1) Archive

Field	Season	Task	Pass	Device
Example 1 Dealer Development Days   Dealer Development Days	2025   Corn	Planted	0	30107318
Adwell Kerry Baer   Baer Farms	2025   Corn	Harvested	0	Sams 2020
Home Kerry Baer   Baer Farms	2025   Corn	Harvested	0	Sams 2020
FPS DAY 2	2025   Corn	Harvested	114	Black Demo

Client: Dealer Development Days  
Farm: Dealer Development Days  
Field: Example 1  
Year: 2025  
Crop: Corn

Panorama® All fields Manage Operation Reports Product Support Tremont

**Edit**

Overview  
Data Management  
Application Data Upload  
Archive  
Planning

Search fields

Filter

Download Selected

Edit (1) Archive

Field	Season	Task	Pass	Device
Example 1 Dealer Development Days   Dealer Development Days	2025   Corn	Planted	0	30107318
Adwell Kerry Baer   Baer Farms	2025   Corn	Harvested	0	Sams 2020
Home Kerry Baer   Baer Farms	2025   Corn	Harvested	0	Sams 2020
FPS DAY 2 Demo   Demo	2025   Corn	Harvested	0	Sams 2020
Test DDD   25.1 Training	2025   Corn	Harvested	0	Nate's desk (Not Sandbox)
Test DDD   25.1 Training	2025   Corn	Harvested	1	Nate's desk (Not Sandbox)

Client: Dealer Development Days  
Farm: Dealer Development Days  
Field: Example 1  
Year: 2025  
Crop: Corn

Clear  
Cancel  
Save

**Edit** allows you to edit basic information about a field.

Select a field to change information, download, or archive.

Each time a 20|20 creates a new data layer in a field, it is considered a pass. Pass numbers start at 0. Double cropping in a field equals 2 planter passes (pass 0 and 1).

If a field was planted under the wrong name, changing the CFF and clicking **Save** will change the name on Panorama.

Panorama® All fields Manage Operation Reports Product Support Tremont

PRODUCT SUPPORT TREMONT

# Manage Operation

- Overview
- Data Management
- Application Data Upload
- Edit
- Archive
- Planning
- Software
- Members
- Devices
- Data sharing
- Billing
- Feedback

## Archive

Archived data is hidden from your operation's field list, totals, and statistics. From this page, you can choose to permanently delete archived data or restore it to include it in your operation's records again.

Restore Selected

Field	Season	Device	Archive Date
<input type="checkbox"/> Adwell Gravel Pit   Baer Farms	2025	Sams 2020	Oct 8, 2025
<input type="checkbox"/> South 40 Sam Baer   Baer Farms	2025	Sams 2020	Oct 6, 2025
<input type="checkbox"/> South 40 Sam Baer   Baer Farms	2025	Sams 2020	Oct 6, 2025
<input type="checkbox"/> Default Field Default Client   Default Farm	2025	Sams 2020	Oct 6, 2025

The **Archive** tab allows the user to permanently delete fields, as well as restore them to the All Fields list.

**Delete Permanently**  
Once deleted, a field can never be recovered.

Panorama® All fields Manage Operation Reports Product Support Tremont

PRODUCT SUPPORT TREMONT

# Manage Operation

- Overview
- Data Management
- Planning
- Fields
- Boundaries
- Prescriptions
- Software
- Members
- Devices
- Data sharing
- Billing
- Feedback

## Fields

Fields (11)

- Colton 1 farm Add farm
- Coltrain 1 farm Add farm
- DDD 1 farm Add farm
- Dealer Development Days 1 farm Add farm
- Sam 1 farm Add farm
- Test 1 farm Add farm
- Zenz 1 farm Add farm

The **Fields** tab allows you to create a client farm field list from scratch, pull in CFF from uploaded fields, or import from JD operations center.

**Add Field** allows you to create a field by filling out Client Farm and Field information.

Add client

Client

Farm

Field

Save and add another

Save and close Cancel

Panorama® All fields Manage Operation Reports Product Support Tremont

PRODUCT SUPPORT TREMONT

# Manage Operation

Click a field to expand it. This allows you to add a field to the current CFF structure or create a plan (add a boundary and prescription) to be activated on the 20|20.

## Fields

Search Fields [ ] [Download] [Import] [Add field]

Fields (11) [Expand All]

- Colton 1 farm Add farm
- Spaghetti Farms 3 fields Add field
  - Back 40 0 plans NEW PLAN
    - No plans have been made for this field. Create a plan to start getting ready for your season.
  - Fish pond 0 plans NEW PLAN
    - No plans have been made for this field. Create a plan to start getting ready for your season.
  - Rachel's Parents 0 plans NEW PLAN
    - No plans have been made for this field. Create a plan to start getting ready for your season.
- Coltrain 1 farm Add farm

Devices  
Data sharing  
Billing  
Feedback

Panorama® All fields Manage Operation Reports Product Support Tremont

PRODUCT SUPPORT TREMONT

# Manage Operation

## Boundaries

Search Boundaries [ ]

Past Uploads [Refresh]

Name	Client   Farm   Field	Date Created	
Test	Example 1 Dealer Development Days   Dealer Development Days	3 hr. ago	[ ]

The **Boundaries** tab displays the boundaries assigned to a field with their name. It also allows you to download boundaries as .2020 files or as shape files. Click the 3 dots to delete the boundary file.

- Overview
- Data Management
- Planning
- Fields
- Boundaries**
- Prescriptions
- Software
- Members
- Devices
- Data sharing
- Billing
- Feedback

Panorama® All fields Manage Operation Reports Product Support Tremont

PRODUCT SUPPORT TREMONT

# Manage Operation

- Overview
- Data Management
- Planning
- Fields
- Boundaries
- Prescriptions
- Software
- Members
- Devices
- Data sharing
- Billing
- Feedback

## Prescriptions

Search Prescriptions

Refresh

Name	Client   Farm   Field	Units	Date Created	
NW 62_Corn Seed_20230415 (2)	G-Sketty Coltrain   Spaghetti	seeds/ac (Seeding)	7/9/2025, 1:49:23 PM	⋮
NW 62_Corn Seed_20230415 (2)	G-Sketty Coltrain   Spaghetti	seeds/ac (Seeding)	7/9/2025, 1:49:23 PM	⋮
SDM Farms Payne Northeast 7	Case Study	gal/ac (Liquid)	6/25/2025	⋮

The **Prescriptions** tab displays the prescriptions assigned to a field with their name. It also allows you to download prescriptions as .2020 files or as shape files. Click the 3 dots to delete the prescription file.

<https://panorama.ag/Cmf67YKQ/operation/prescriptions>

Panorama® All fields Manage Operation Reports Product Support Tremont

PRODUCT SUPPORT TREMONT

# Manage Operation

- Overview
- Data Management
- Planning
- Software
- Members
- Devices
- Data sharing
- Billing
- Feedback

## Software

RELEASED SEP 3, 2025

**2025.1.7** LATEST Download

Release details

RELEASED AUG 25, 2025

**2025.1.6** Download

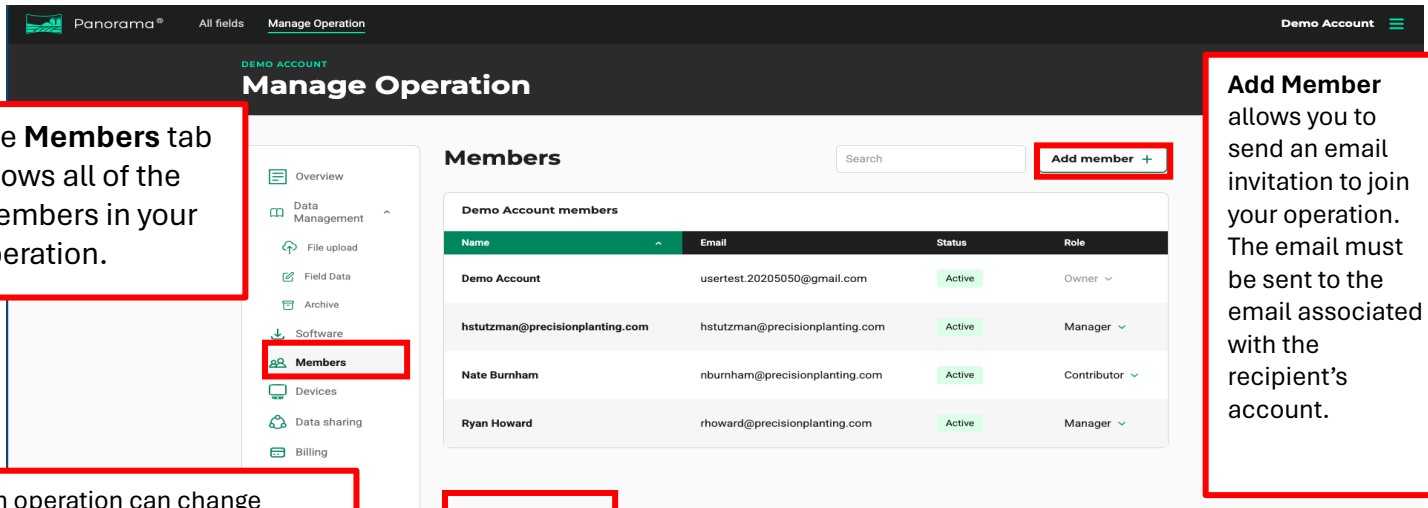
Release details

RELEASED MAY 21, 2025

**2025.1.5** Download

Release details

The **Software** tab has the latest software versions required to run Panorama in field.



The **Members** tab shows all of the members in your operation.

**Add Member** allows you to send an email invitation to join your operation. The email must be sent to the email associated with the recipient's account.

An operation can change ownership from the current owner to one of the Managers listed in the operation members. Once the member is listed as a manager, an option will show to make them the owner. An email will be sent to the new owner to accept and inform them of the ownership change.

data

**Manager** ✓  
Can view all data, as well as manage the operation's users, devices, and data settings.

**Contributor**  
Can add and view field data for the operation, but not edit or delete it.

**Read Only**  
Read-only access to field data for the operation.

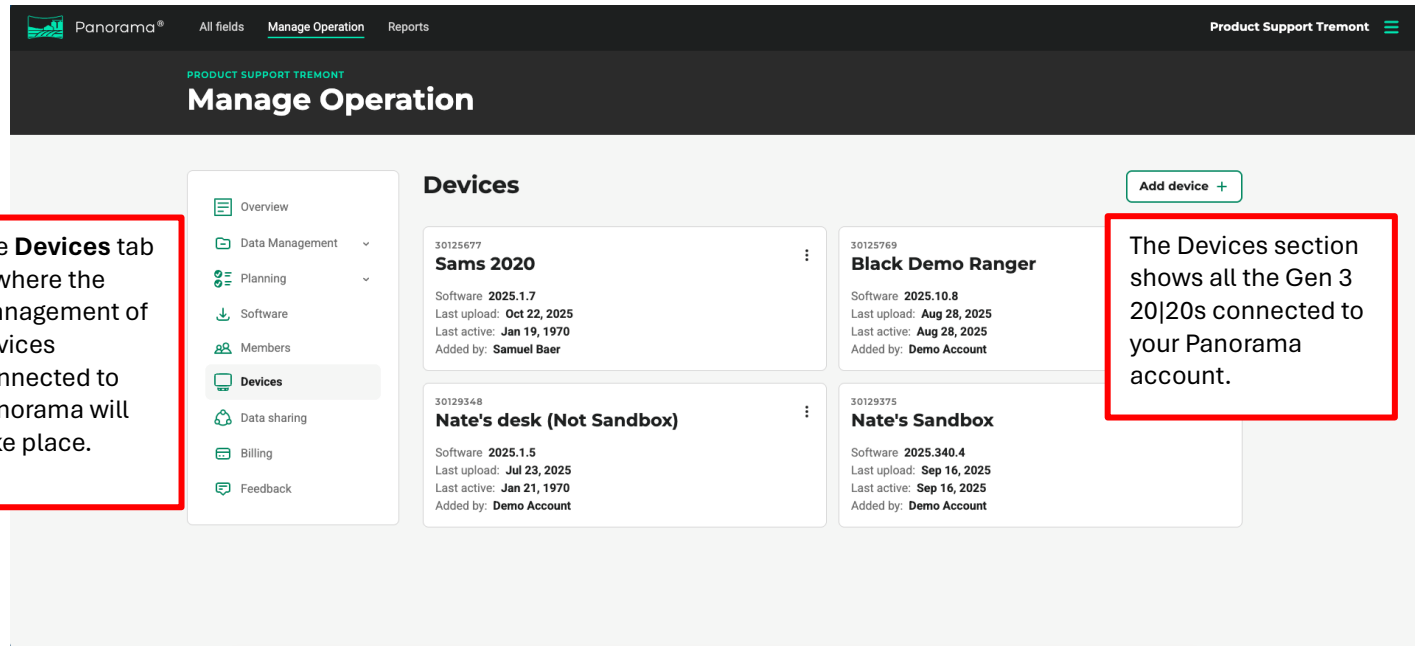
**Remove member**

There are three roles that can be assigned when adding someone to an operation.

**Contributor** – Can view data and utilize tools.

**Manager** – Can add devices, change API statuses, as well as invite/remove operation members.

**View Only** – Can only view data uploaded to an operation.



The **Devices** tab is where the management of devices connected to Panorama will take place.

The **Devices** section shows all the Gen 3 20|20s connected to your Panorama account.

**Data Sharing** is where the management of data sharing will take place.

Note: When using Climate FieldView API and using the iPad in cab for map viewing, Live View Only MUST be enabled in FVM settings on the 20|20 to avoid duplicate data in FieldView.

**Precision Planting Support**  
You are sharing your operation data with Precision Planting support.

**Precision Planting Support**, when turned on, gives Precision Planting permission to view your operation and data.

**Aurora LLM Data Sharing**  
Aurora – Panorama's smart assistant – uses the latest AI tools to help you get the most out of your data, including "large language models" (LLMs) that can read and process data. Disabling this setting will turn off all Aurora features that require the use of an LLM.

**Aurora Smart Summary** can be turned on or off with the toggle. Toggling off the Aurora LLM Data Sharing will remove smart summaries from field details.

**Privacy**  
To read about how we use your data while you are on our services, please review our [End User License Agreement](#).

**Connections**

Granular Insights  Total Acre - Yield Management System

Connect your Panorama account with Granular Insights to unlock Corteva Agriscience's decision science agronomic solutions and collaborate with your Corteva trusted advisor to discover opportunities and make data-driven decisions.

YMS, or Yield Management System, is a core component of the Total Acre grower program. Integrating with YMS will allow us to automatically pull equipment files into our system without needing the end user data.

**Connections** is where each API can be enabled or disabled. Slide the toggle over to initiate the desired connection.

**Billing** is where management of the subscription and billing information takes place.

**Billing**  
Your operation is active

To manage your billing, pay for or change payment method, and view receipts from previous purchase, click **Manage Billing**.

If a prepaid code is being used, select **Apply a prepaid code** to add an additional year activation.

Feedback allows you to give feedback on desired functionality, report issues, and improvements to be made on current functions.

Agreeing to follow up communication allows Precision Planting to follow up with a response to your feedback.

# Reports

There are 3 reports available on the **Reports** page: Input, condensed, and Agronomic. The input report lists out totals for each product applied and acres associated.

Name	Total Applied	Acres
10pct Boron	6.3 gal	57.3 ac
Example 1 >	6.3 gal	57.3 ac
28-0-0-5	494.4 gal	84.3 ac
Example 1 >	494.4 gal	84.3 ac
8-2-0-2	109.1 gal	27 ac
Example 1 >	109.1 gal	27 ac
9-30-0-1	57.3 ac	57.3 ac
Example 1 >	57.3 ac	57.3 ac
Nachurs CropMax	84.5 ac	84.5 ac
Example 1 >	84.5 ac	84.5 ac
Nachurs GreenFlag	27 ac	27 ac
Example 1 >	27 ac	27 ac
Nachurs Triple Option	57.5 ac	57.5 ac
Example 1 >	57.5 ac	57.5 ac
RhizoLink	10.3 gal	84.5 ac

Reports can be condensed down based on the selection of included activity, year/crop, and client, farm, or field.

Condensed report displays a more narrow scope including seeding information as well as harvest information based on information uploaded to Panorama and filters selected.

Field Name	Planting Dates	Hybrids	Total Applied	Population
Example 1	4/15 10:03 AM >	LG66C06VT2PRO LG66C91STX	0 units	29.0K seeds/ac

INCLUDED ACTIVITY

- Planting
- Spraying
- Sidedress
- Strip Till
- Harvest

INCLUDED DATA

- Granular
- Force
- Global
- Granular Products
- Harvest
- Harvest Load List
- Hybrids
- Implement
- Linear Position
- Liquid
- Liquid Products
- Pressure
- Seeding
- Thumbnail
- Weather

Print Overview

CLIENT

# Dealer Development Days

FARM Dealer Development Days

FIELD Example 1

Plant

### Weather

Temperature	Humidity	Wind Speed	Wind Direction	Cloudiness
74.4 °F	36 %	11.3 mph	S	10 %

### Seeding

singulation	skips	vacuum	doubles	population_dev...	sri	population_set...	population	Name	Device
99.8	0.147	20	0.076	-46.2	13.7	29.1K	29.0K	Seeding	30107318

### Liquid Products

Product	Total Applied	Acres
10pct Boron	6.3 gal	57.3 ac
28-0-0-5	494.4 gal	84.3 ac
8-29-2	109.1 gal	27 ac
9-30-0-1	504.1 gal	57.3 ac

**Input Report** will display data for overall products based on the selected filters on the left. Adding or removing filters will increase or decrease the length and details of the report.

Click the thumbnail filter to include a screenshot of a map layer.